



STERNHOF



3-ZIMMER-WOHNUNG + DACHTERRASSE

RÄDLINGER
Living+

3. OBERGESCHOSS | Wohnfläche 95,15 m²

Wohnen | Essen | Kochen

32,45 m²

Diele

12,56 m²

Kind

9,69 m²

Bad

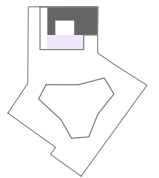
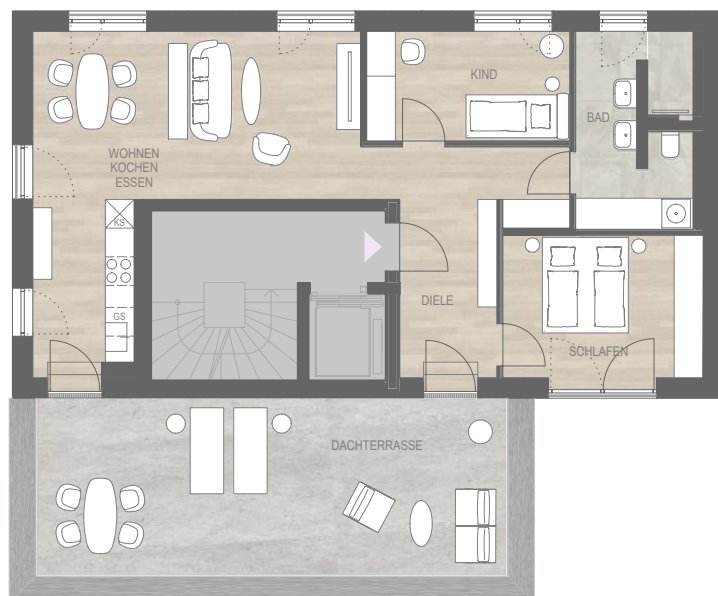
9,00 m²

Schlafen

12,98 m²

Dachterrasse (36,94 m² x 0,5)

18,47 m²



HAUS B

B 3.1