

# PENTHOUSE-MAISONNETTE- 3-ZIMMER-WOHNUNG + BALKONE UND DACHTERRASSE

2. - 4. OBERGESCHOSS Wohnfläche 152,93 m<sup>2</sup>



Etage 1 | 2. Obergeschoss

Wohnfläche 62,12 m<sup>2</sup>

inkl. Balkon 11,71 m<sup>2</sup>

HAUS A  
A 2.3

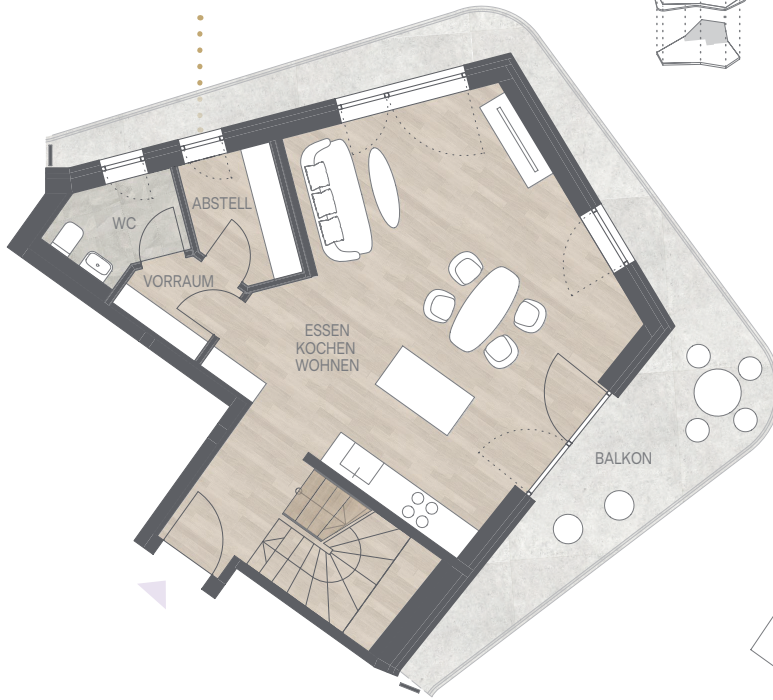




STERNHOF

### Etage 2 | 3. Obergeschoss

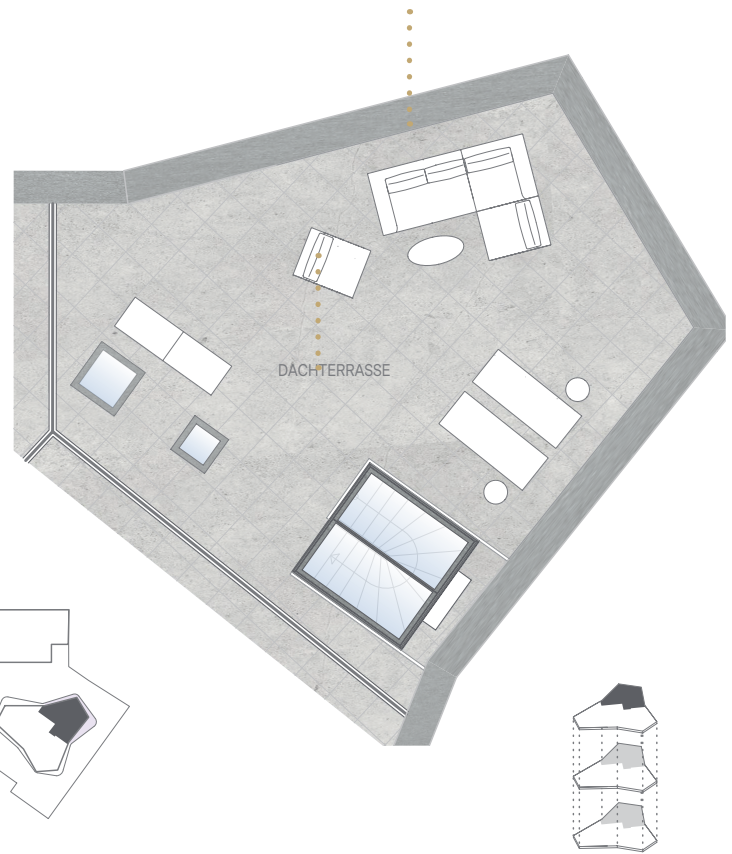
Wohnfläche 59,58 m<sup>2</sup>  
inkl. Balkon 12,01 m<sup>2</sup>



1m 5m

### Etage 3 | 4. Obergeschoss

Dachterrasse 31,23 m<sup>2</sup>  
(62,46 m<sup>2</sup> x 0,5)



### ETAGE 1

|                                     |                      |
|-------------------------------------|----------------------|
| Diele                               | 12,09 m <sup>2</sup> |
| Vorraum                             | 3,12 m <sup>2</sup>  |
| Bad                                 | 6,10 m <sup>2</sup>  |
| Schlafen                            | 13,86 m <sup>2</sup> |
| Kind                                | 11,57 m <sup>2</sup> |
| Abstell                             | 3,67 m <sup>2</sup>  |
| Balkon (23,42 m <sup>2</sup> x 0,5) | 11,71 m <sup>2</sup> |

### ETAGE 2

|                                     |                      |
|-------------------------------------|----------------------|
| Wohnen/Essen/Kochen                 | 39,02 m <sup>2</sup> |
| Vorraum                             | 2,21 m <sup>2</sup>  |
| WC                                  | 2,94 m <sup>2</sup>  |
| Abstell                             | 3,40 m <sup>2</sup>  |
| Balkon (24,02 m <sup>2</sup> x 0,5) | 12,01 m <sup>2</sup> |

### ETAGE 3

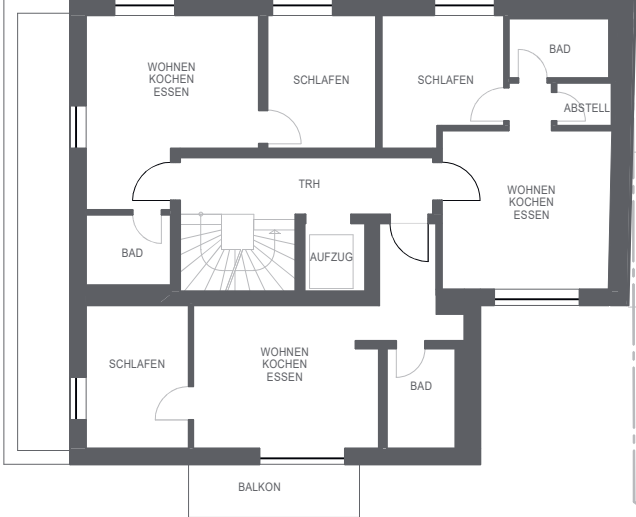
|   |                      |
|---|----------------------|
| Dachterrasse (62,46 m <sup>2</sup> x 0,5) | 31,23 m <sup>2</sup> |
|---|----------------------|

HAUS A  
A 2.3

# GRUNDRISS

## HAUS A

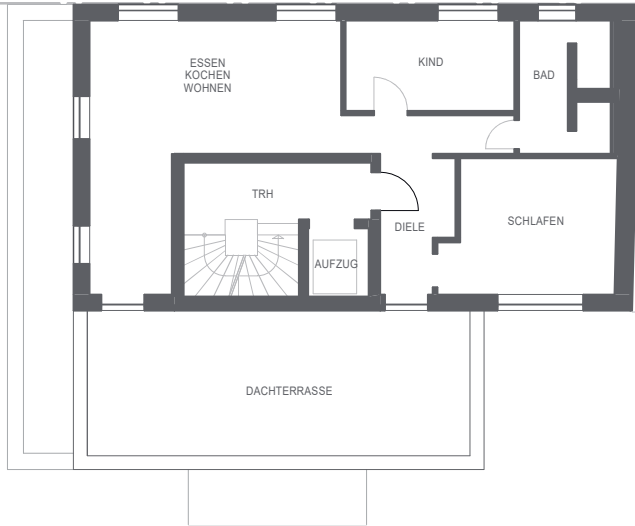
### 2. OBERGESCHOSS | A 2.3



# GRUNDRISS

## HAUS A

### 3. OBERGESCHOSS | A 2.3



# GRUNDRISS

## HAUS A

### DACHTERRASSE | A 2.3

