



STERNHOF

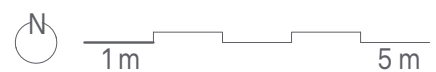
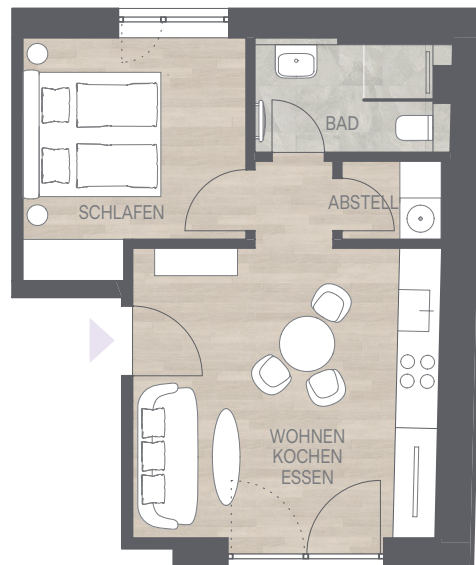
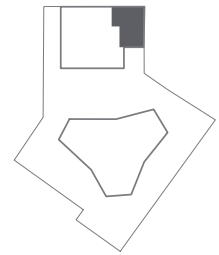


## 2-ZIMMER-WOHNUNG

1. OBERGESCHOSS | Wohnfläche 36,33 m<sup>2</sup>

RÄDLINGER  
*Living+*

Wohnen   Essen   Kochen
20,56 m <sup>2</sup>
Schlafen
10,26 m <sup>2</sup>
Bad
3,87 m <sup>2</sup>
Abstell
1,64 m <sup>2</sup>



HAUS B  
B 1.2

# GRUNDRISS

## HAUS B

### 1. OBERGESCHOSS | B 1.2

